

---

***Istanbul Technical University  
Institute of Energy  
Course: Energy Economics – Spring 2018***

## ***GEOHERMAL POWER***

***by Mathias Seibitz (Dipl. Civil Engineer, guest speaker)***

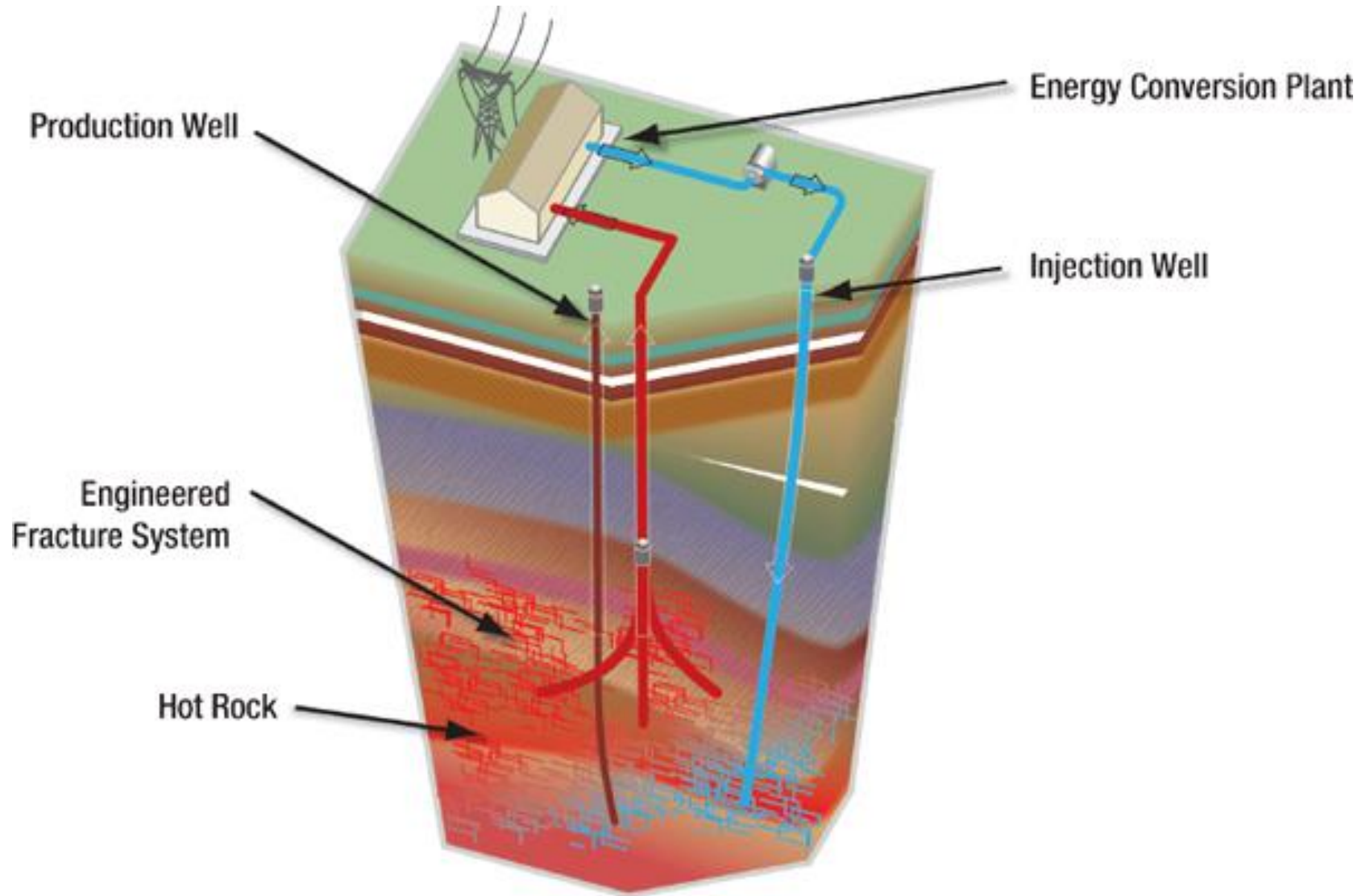
***Istanbul, 12.April 2018***

---

**BORUSAN EnBW ENERGY**

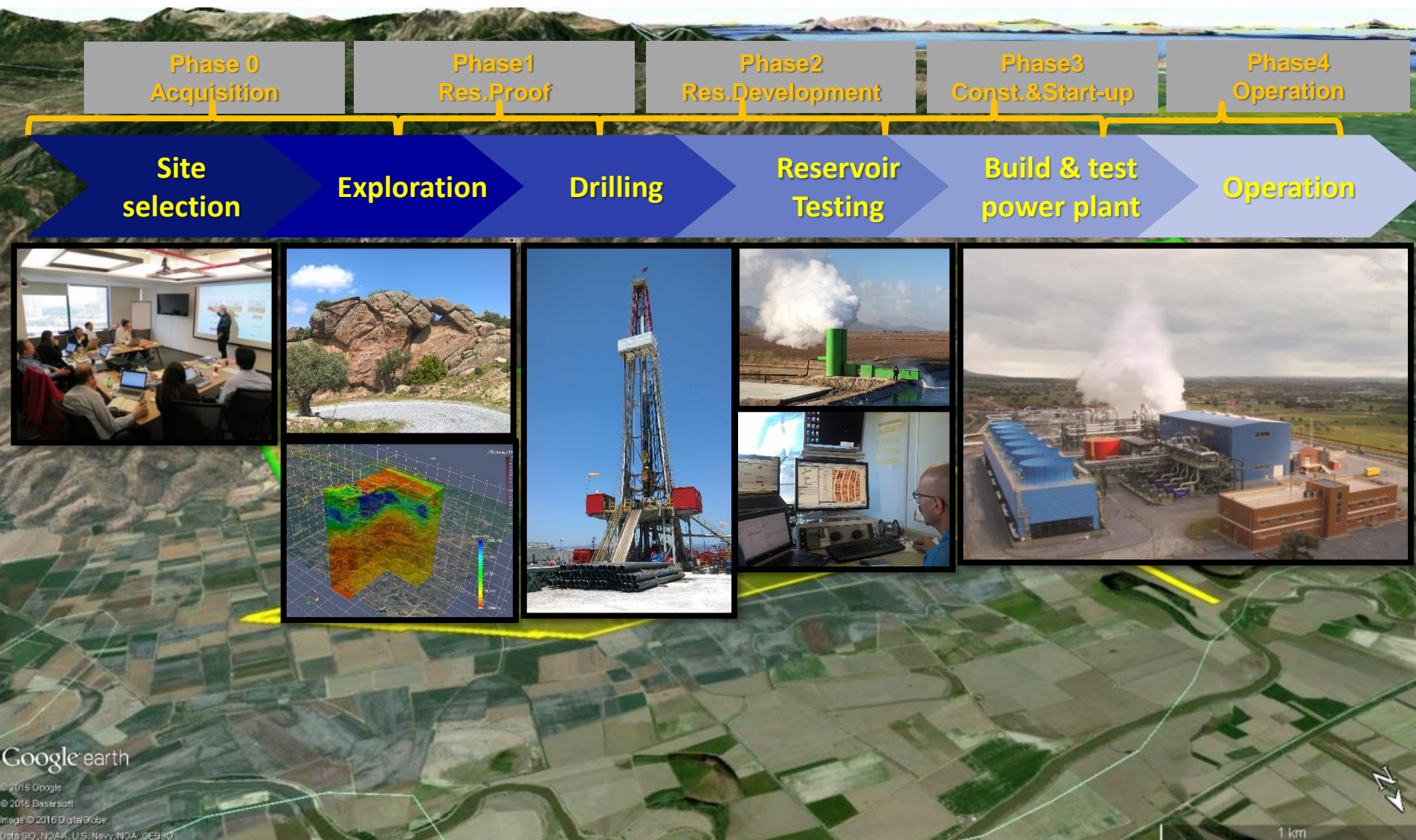
# PROJECT MANAGEMENT

## PROJECT MANAGEMENT OF GEOTHERMAL POWER PLANT



# PROJECT MANAGEMENT

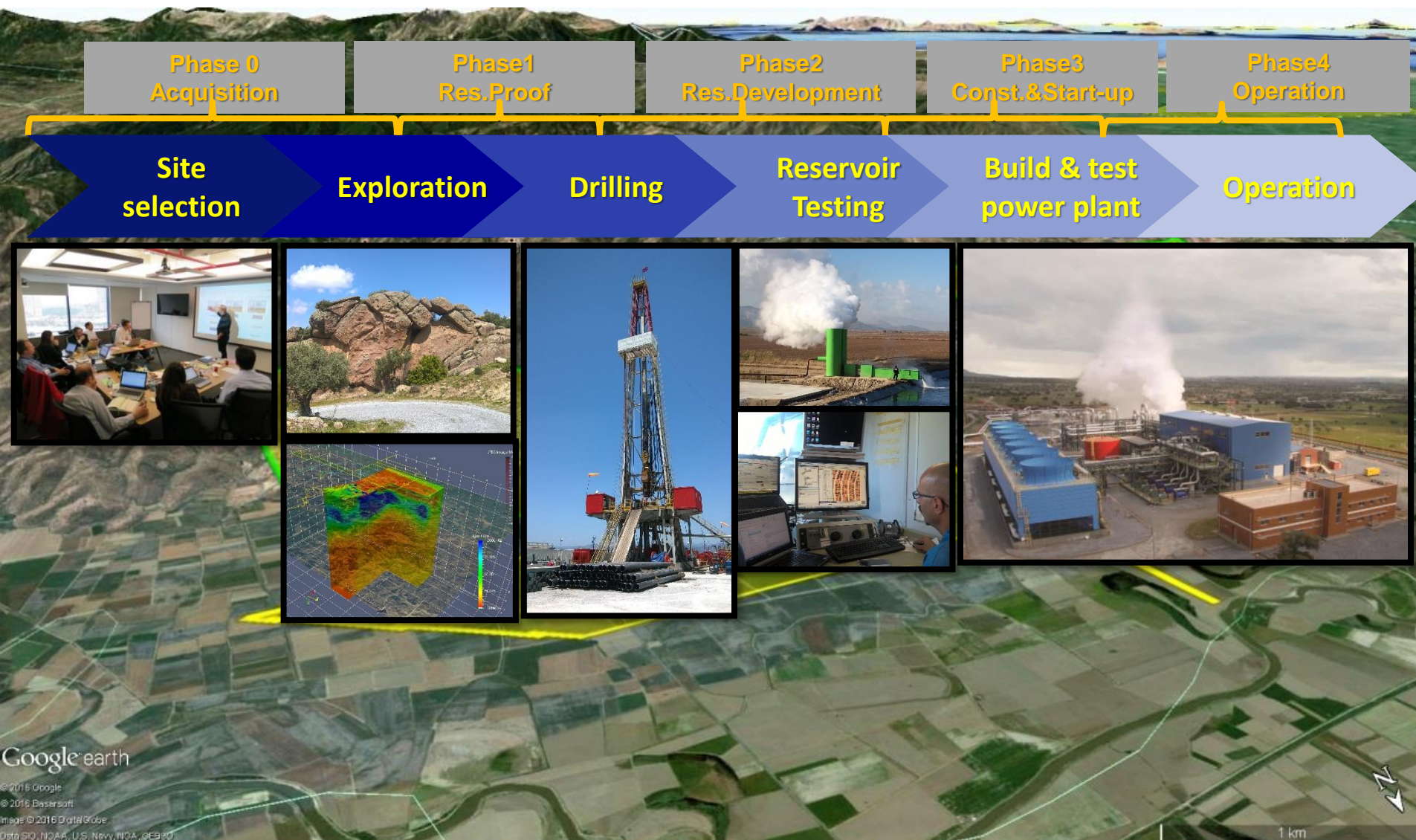
## PROJECT MANAGEMENT OF GEOTHERMAL POWER PLANT





# PROJECT MANAGEMENT

## PROJECT MANAGEMENT OF GEOTHERMAL POWER PLANT



# PROJECT MANAGEMENT

## PROJECT MANAGEMENT OF GEOTHERMAL POWER PLANT

Phase 0  
Acquisition

Phase1  
Res.Proof

Phase2  
Res.Development

Phase3  
Const.&Start-up

Phase4  
Operation

Site  
selection

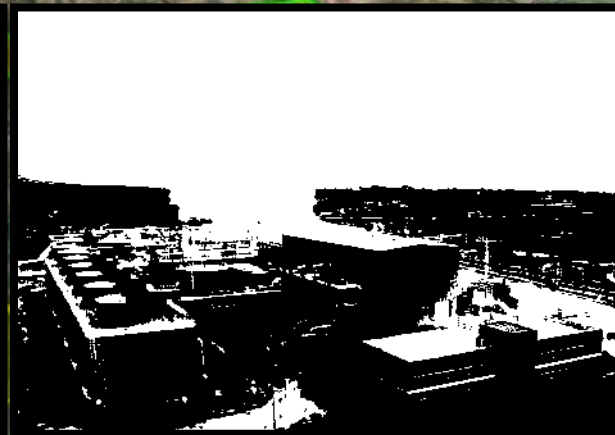
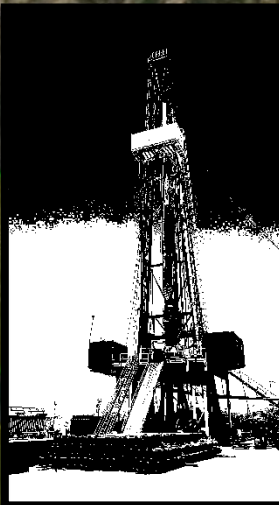
Exploration

Drilling

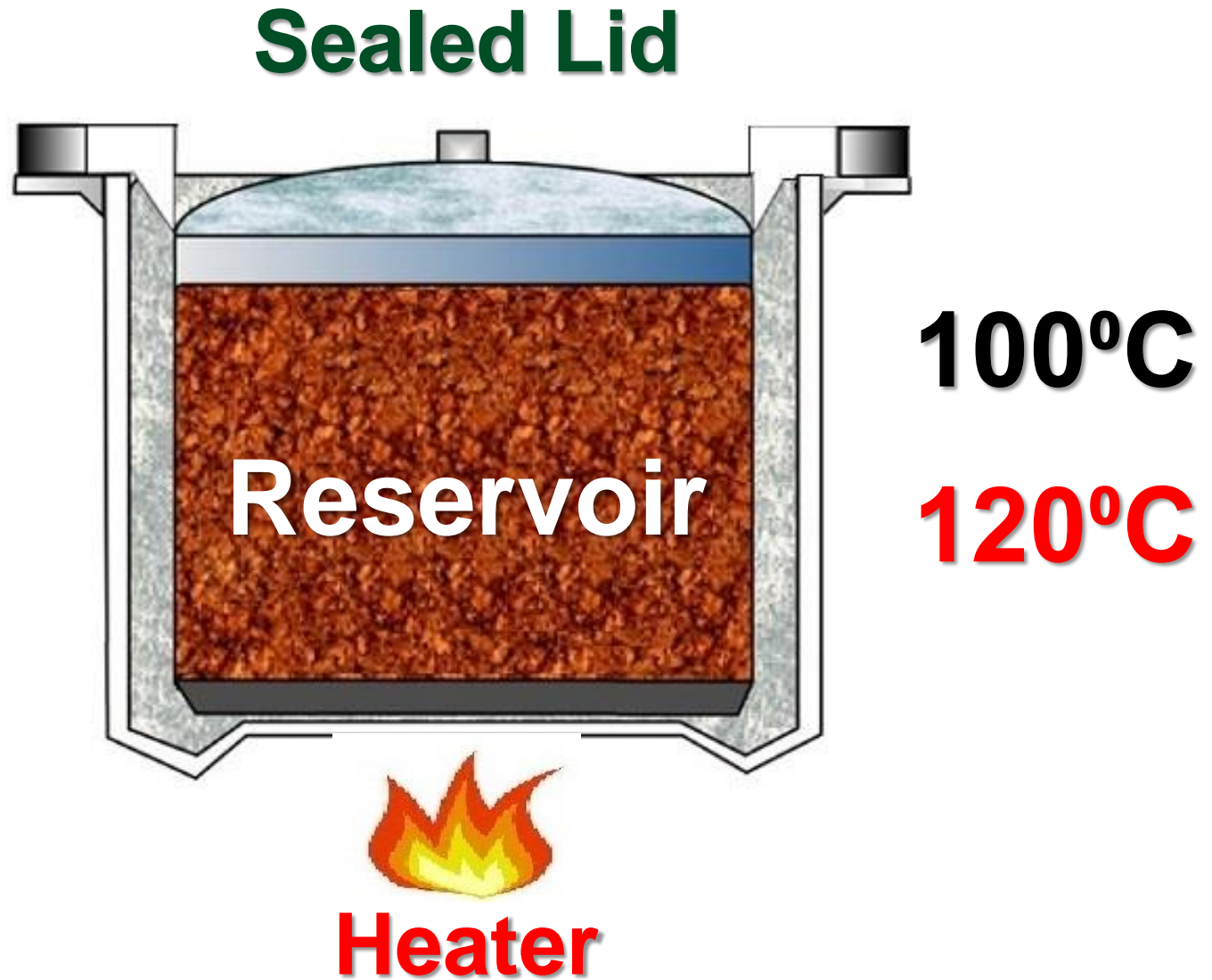
Reservoir  
Testing

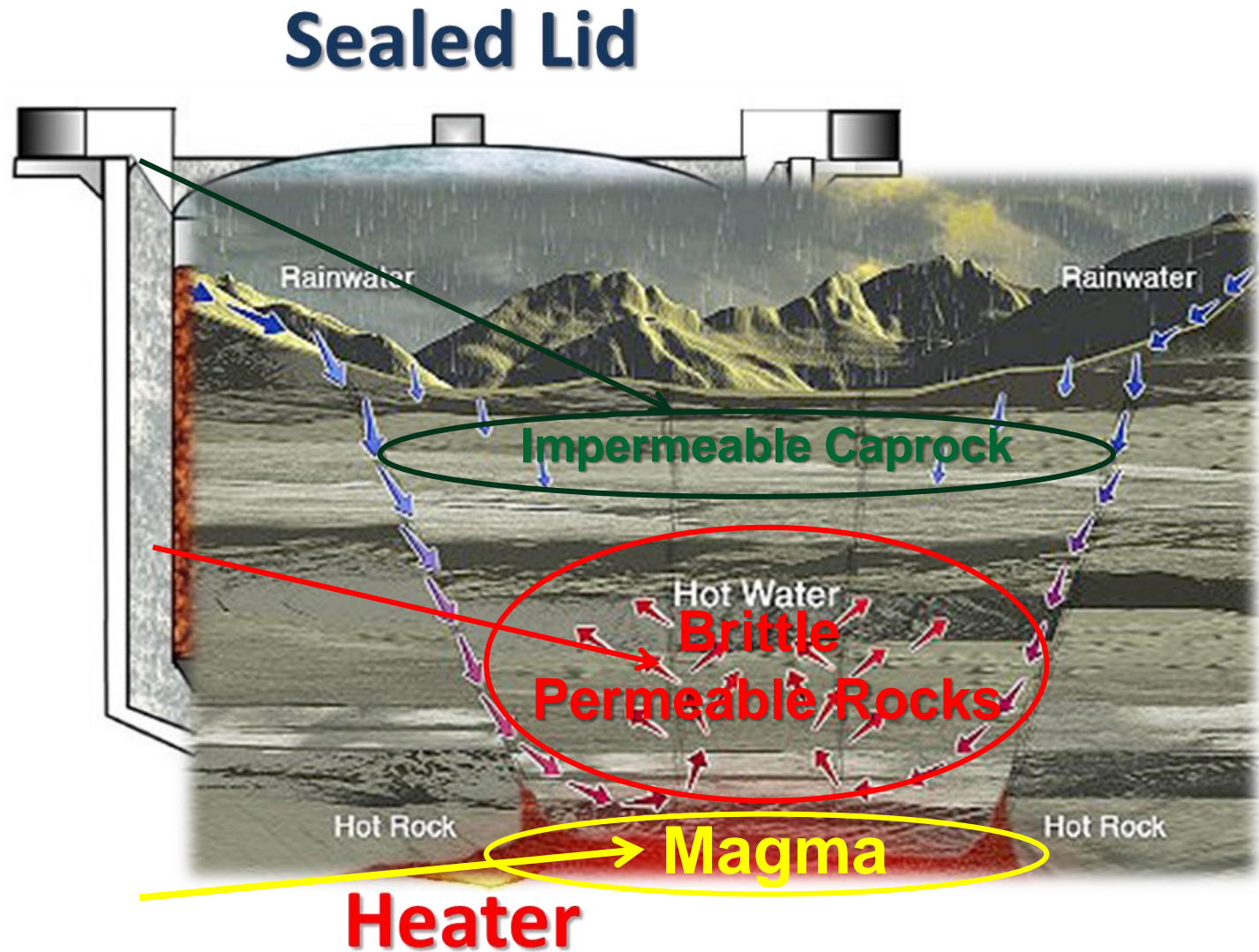
Build & test  
power plant

Operation





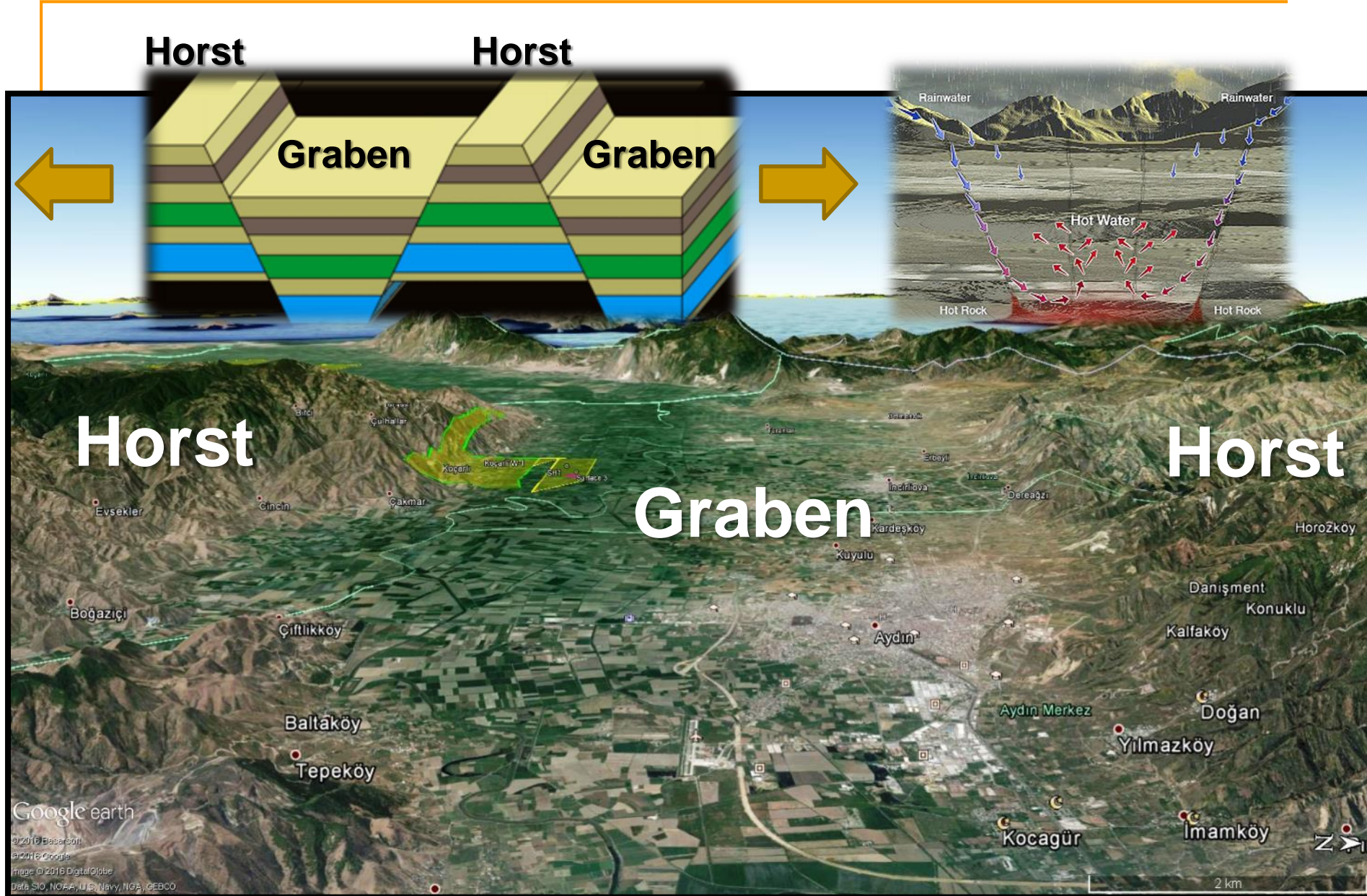






# PROJECT MANAGEMENT

## PROJECT MANAGEMENT OF GEOTHERMAL POWER PLANT





# PROJECT MANAGEMENT

## PROJECT MANAGEMENT OF GEOTHERMAL POWER PLANT

Phase 0  
Acquisition

Phase1  
Res.Proof

Phase2  
Res.Development

Phase3  
Const.&Start-up

Phase4  
Operation

Site  
selection

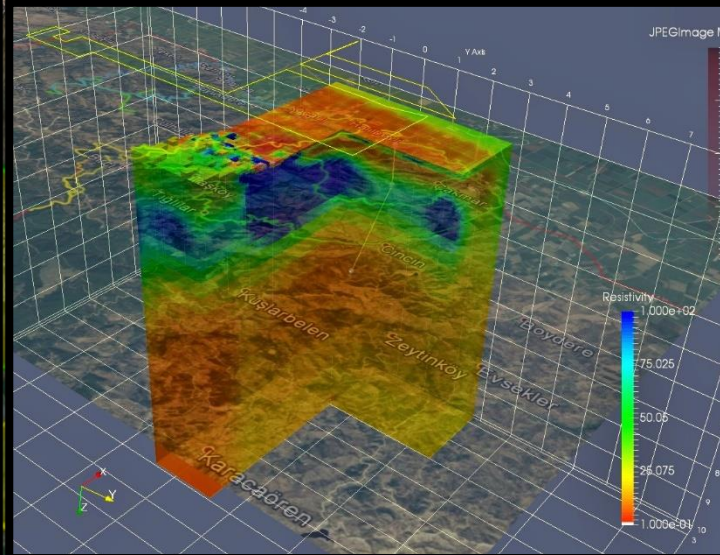
Exploration

Drilling

Reservoir  
Testing

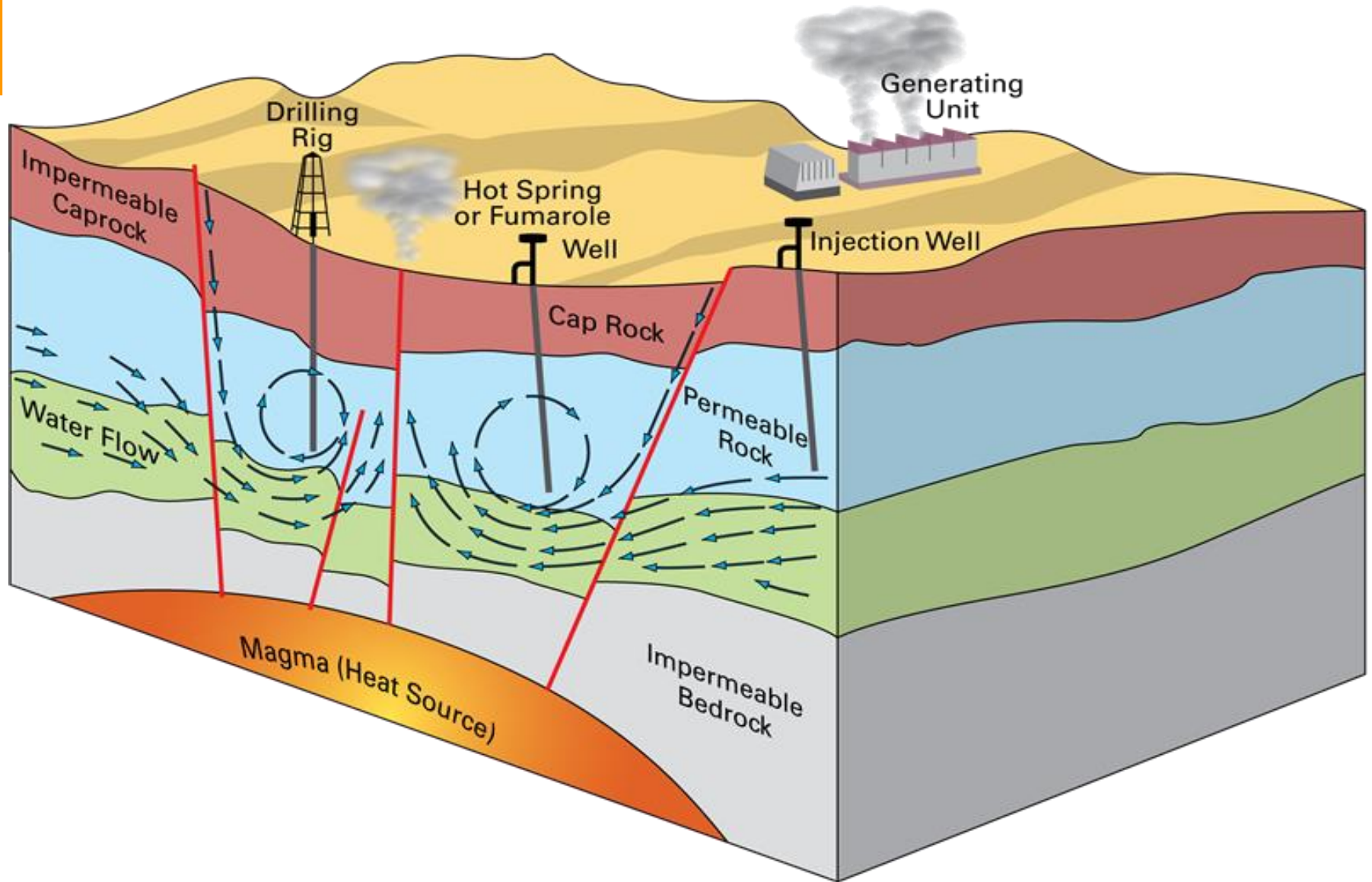
Build & test  
power plant

Operation



# PROJECT MANAGEMENT

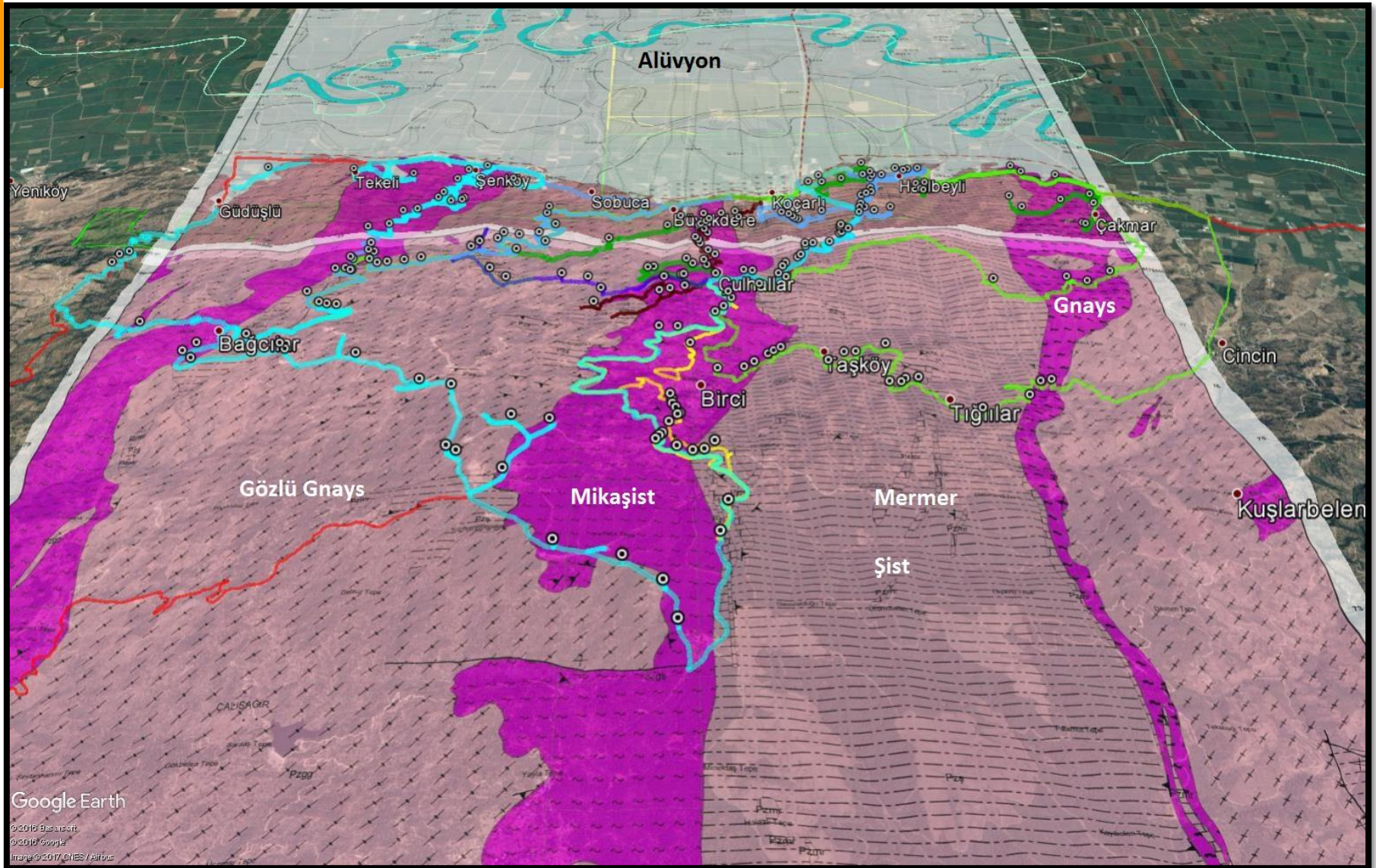
## PROJECT MANAGEMENT OF GEOTHERMAL POWER PLANT





# PROJECT MANAGEMENT

## PROJECT MANAGEMENT OF GEOTHERMAL POWER PLANT





# PROJECT MANAGEMENT

## PROJECT MANAGEMENT OF GEOTHERMAL POWER PLANT



**Mermer**



**Garnet Şist**



**Gözlü gnays**



**Granit**



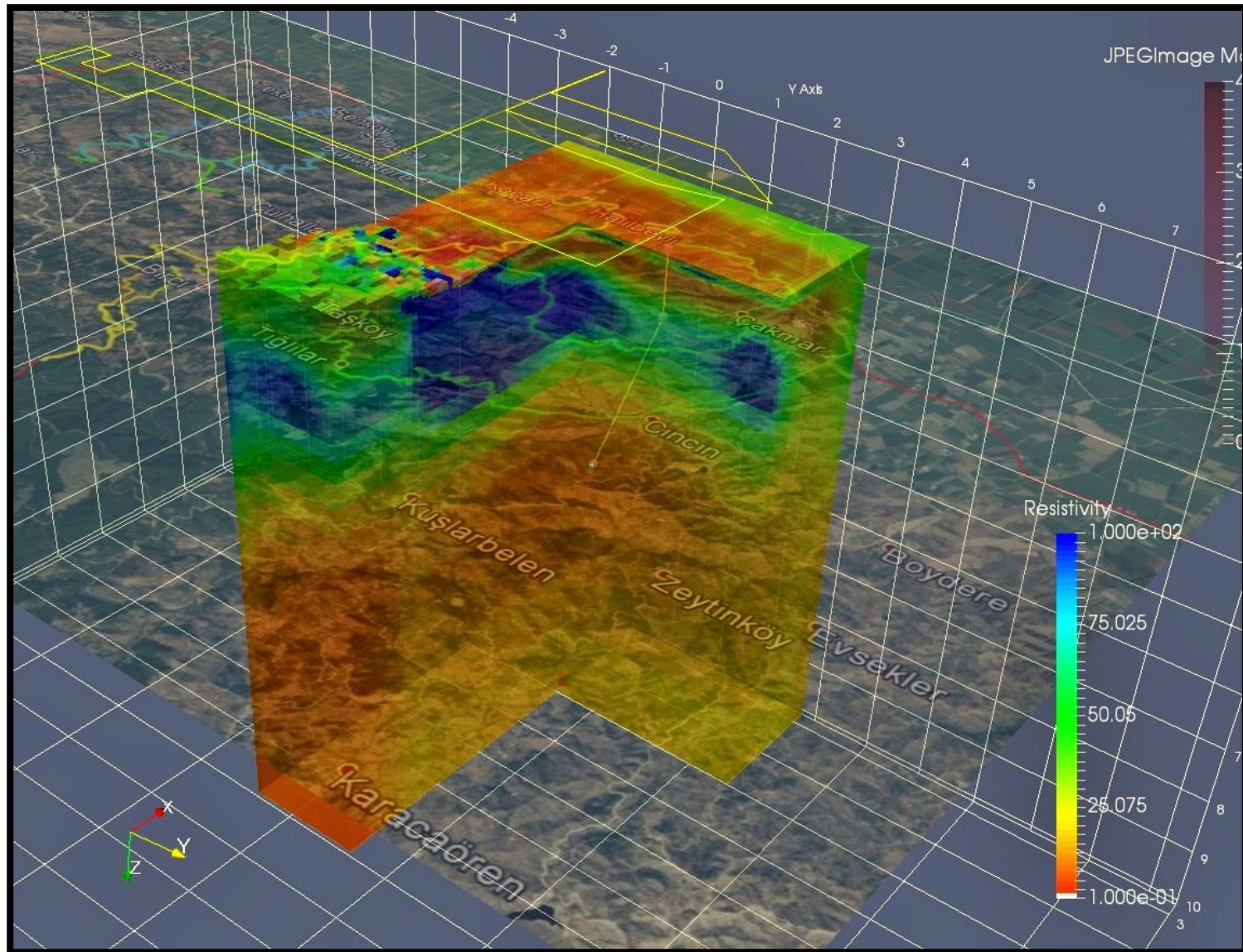


# Fay



# PROJECT MANAGEMENT

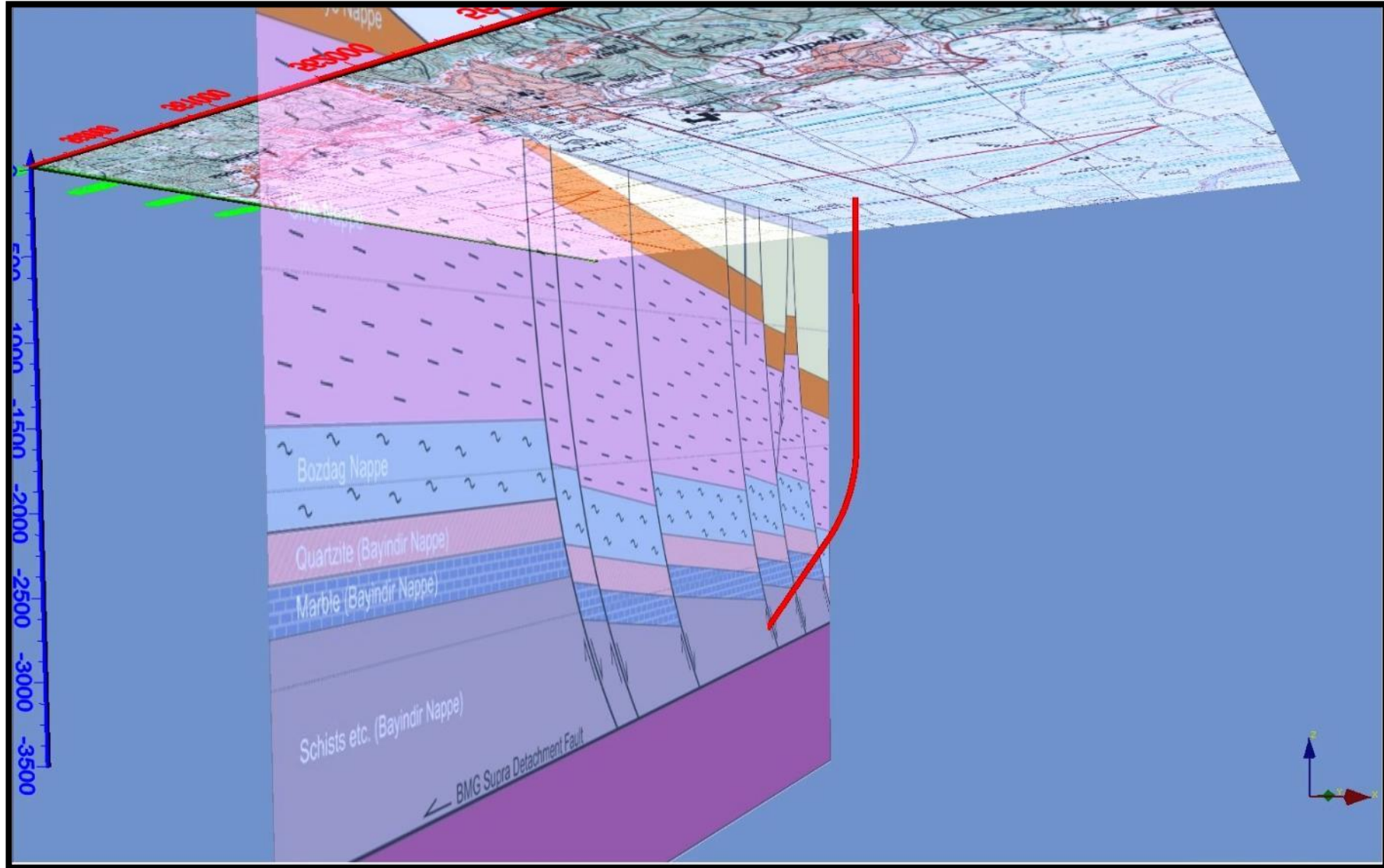
## PROJECT MANAGEMENT OF GEOTHERMAL POWER PLANT





# PROJECT MANAGEMENT

## PROJECT MANAGEMENT OF GEOTHERMAL POWER PLANT



# PROJECT MANAGEMENT

## PROJECT MANAGEMENT OF GEOTHERMAL POWER PLANT

Phase 0  
Acquisition

Phase1  
Res.Proof

Phase2  
Res.Development

Phase3  
Const.&Start-up

Phase4  
Operation

Site  
selection

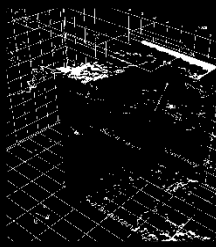
Exploration

Drilling

Reservoir  
Testing

Build & test  
power plant

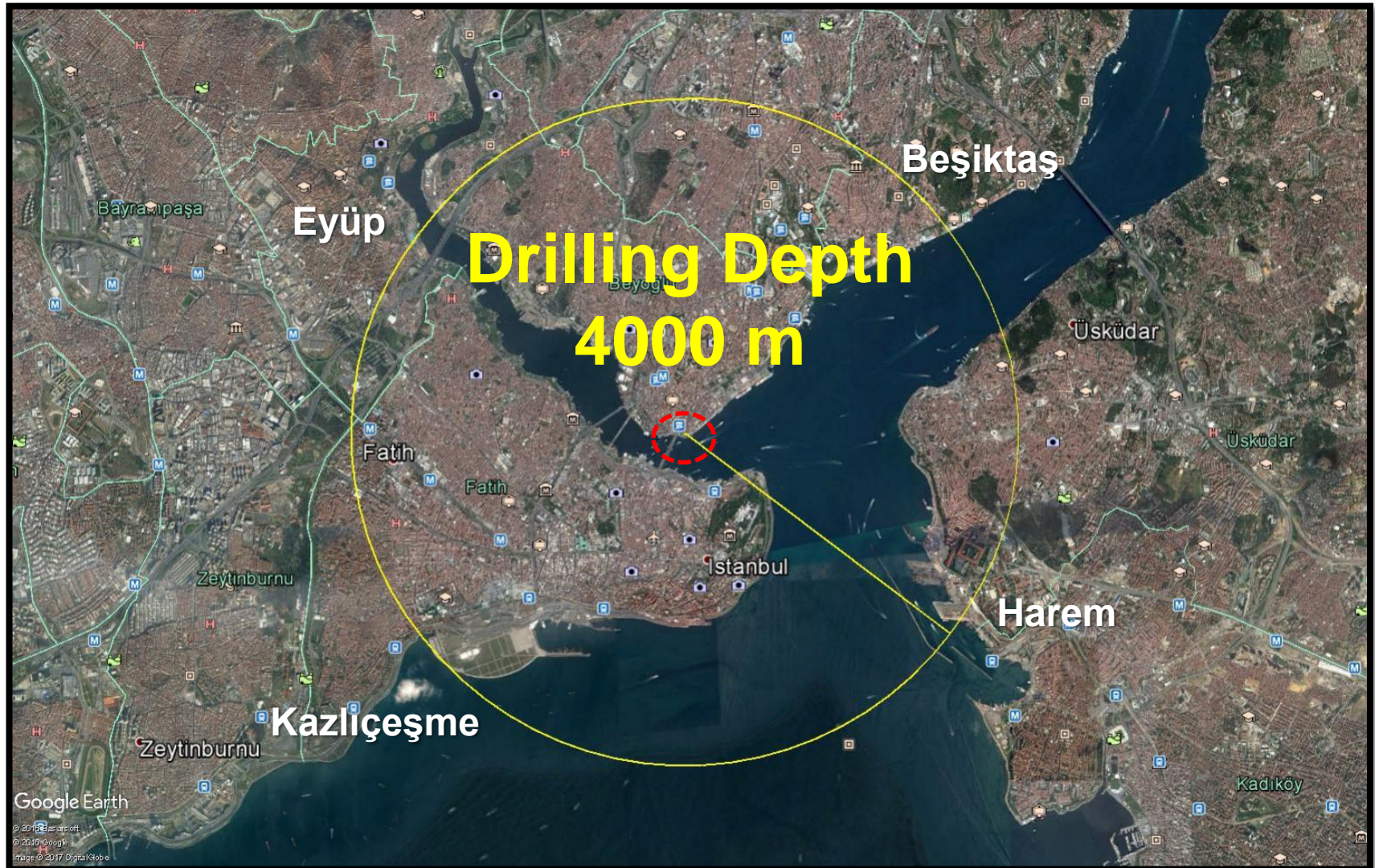
Operation





# PROJECT MANAGEMENT

## PROJECT MANAGEMENT OF GEOTHERMAL POWER PLANT





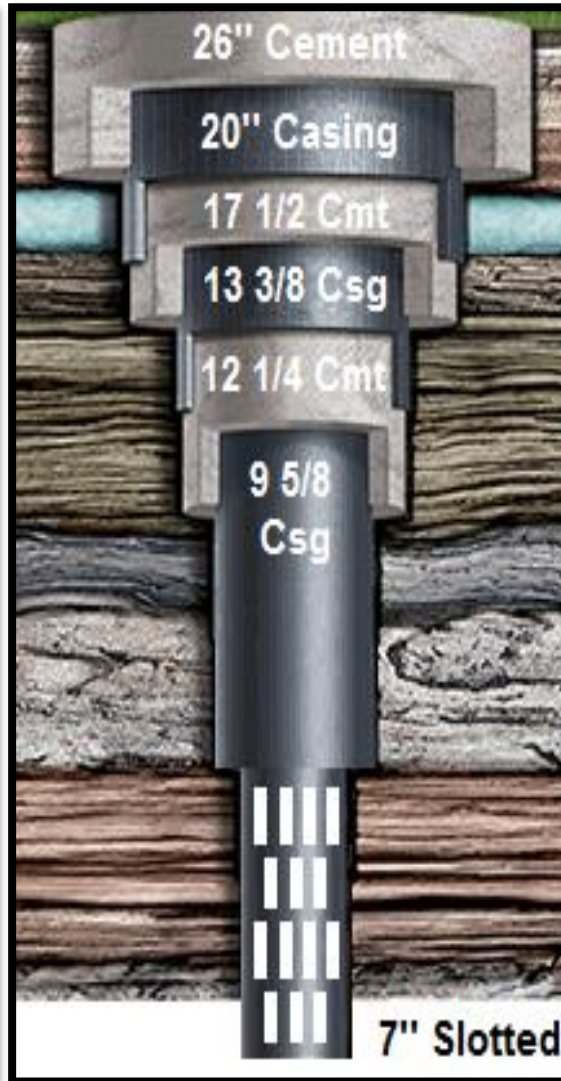
# PROJECT MANAGEMENT

## PROJECT MANAGEMENT OF GEOTHERMAL POWER PLANT

### Casing Setting



### Cementing



### Wellhead Setting



### Well Completion & Testing

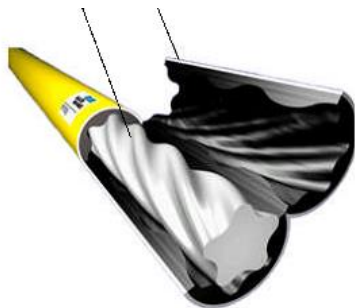
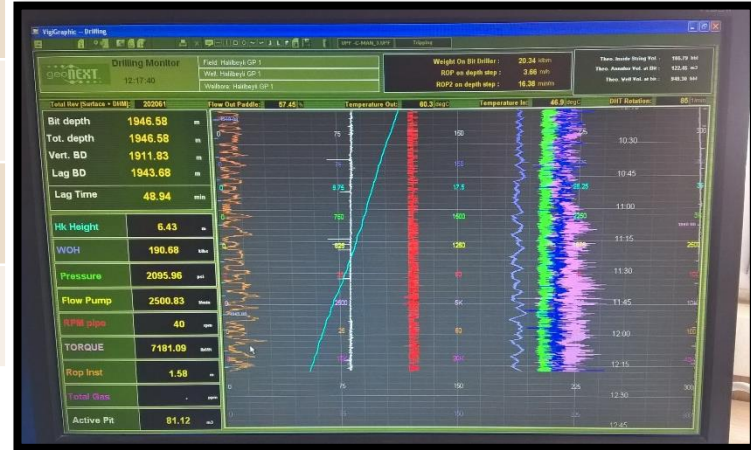




# PROJECT MANAGEMENT

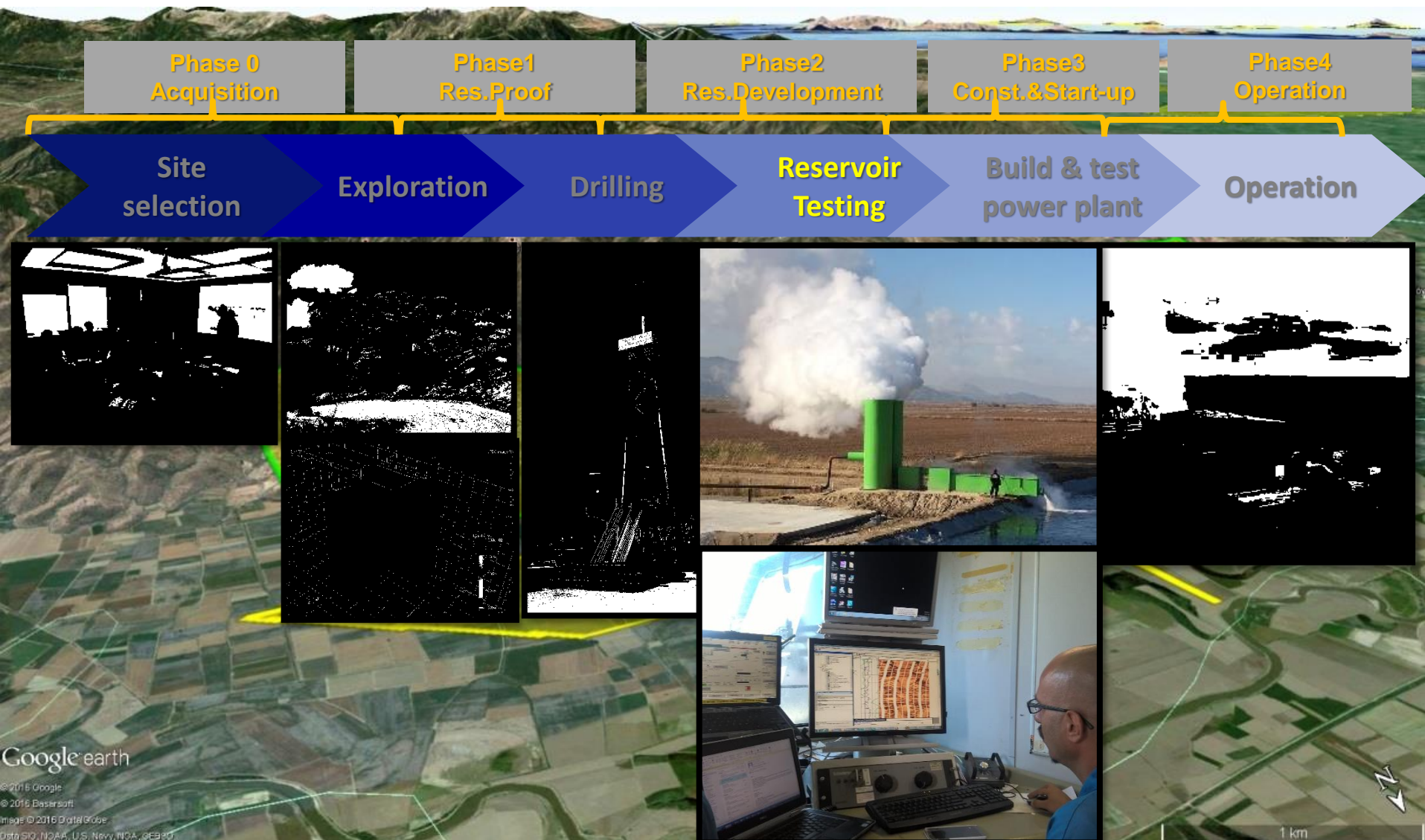
## PROJECT MANAGEMENT OF GEOTHERMAL POWER PLANT

	Drilling Operation	Geological Definition
Services	Drilling	
	Mud Engineering	
	Mud Logging	
	Directional Drilling	Geo-Analysis
	Casing Setting	Fluid Analysis
	Cementation	Gas Analysis



# PROJECT MANAGEMENT

## PROJECT MANAGEMENT OF GEOTHERMAL POWER PLANT

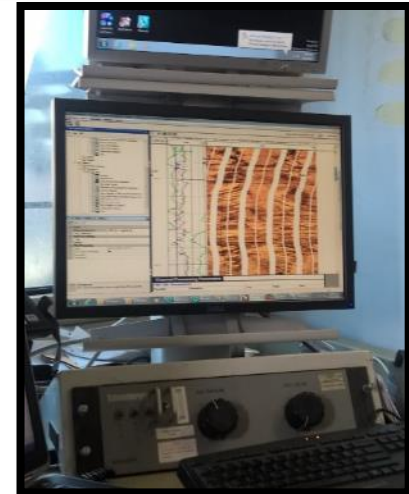
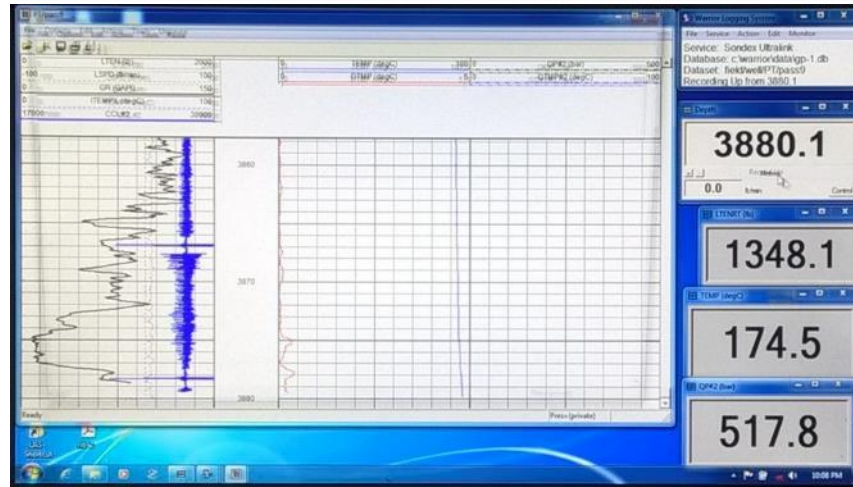




# PROJECT MANAGEMENT

## PROJECT MANAGEMENT OF GEOTHERMAL POWER PLANT

Services	Well Completion & Testing
	Acidization
	Well Logging
	Well Pumping
	Flow Testing
	Inhibitor App.
	Interference



# PROJECT MANAGEMENT

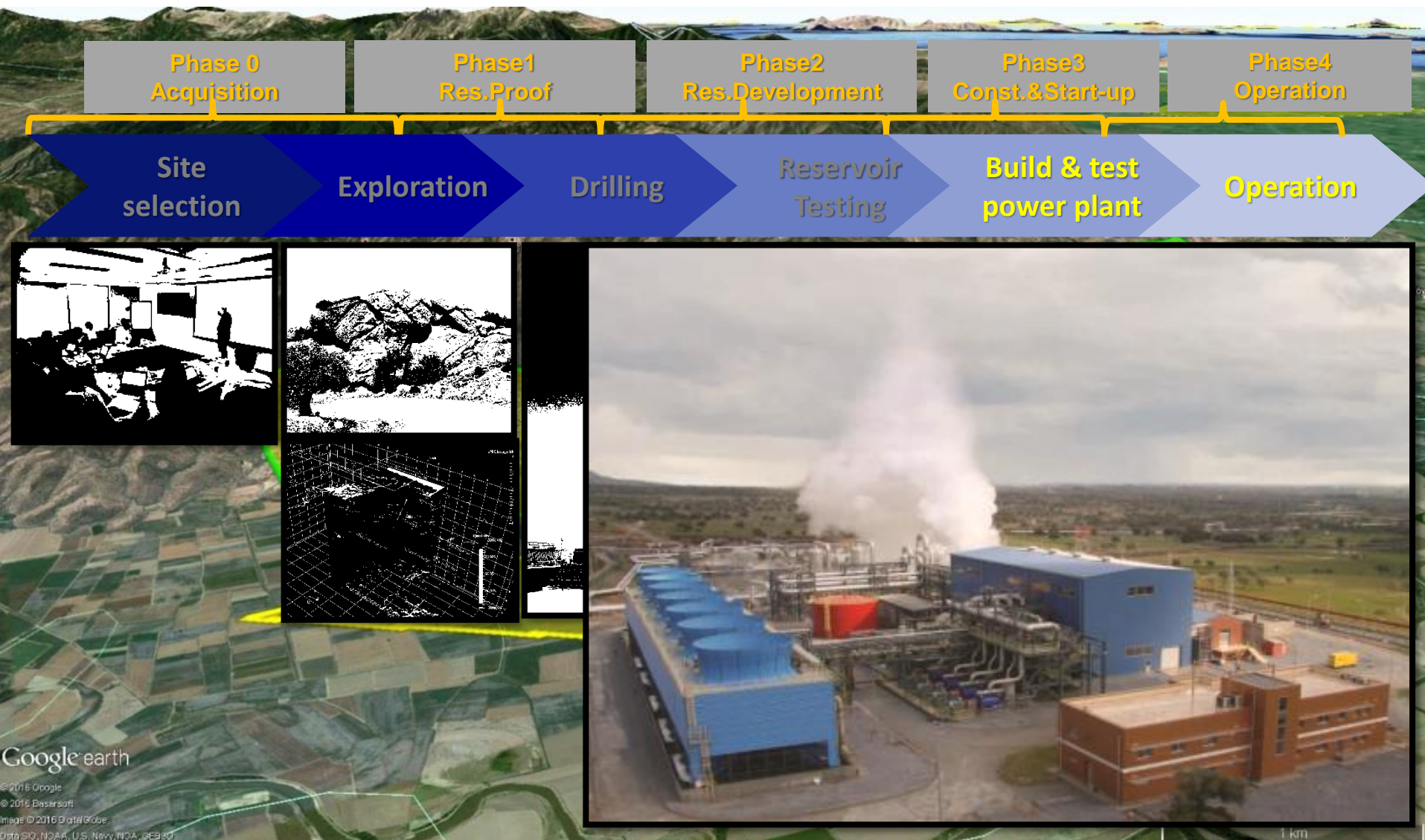
## PROJECT MANAGEMENT OF GEOTHERMAL POWER PLANT





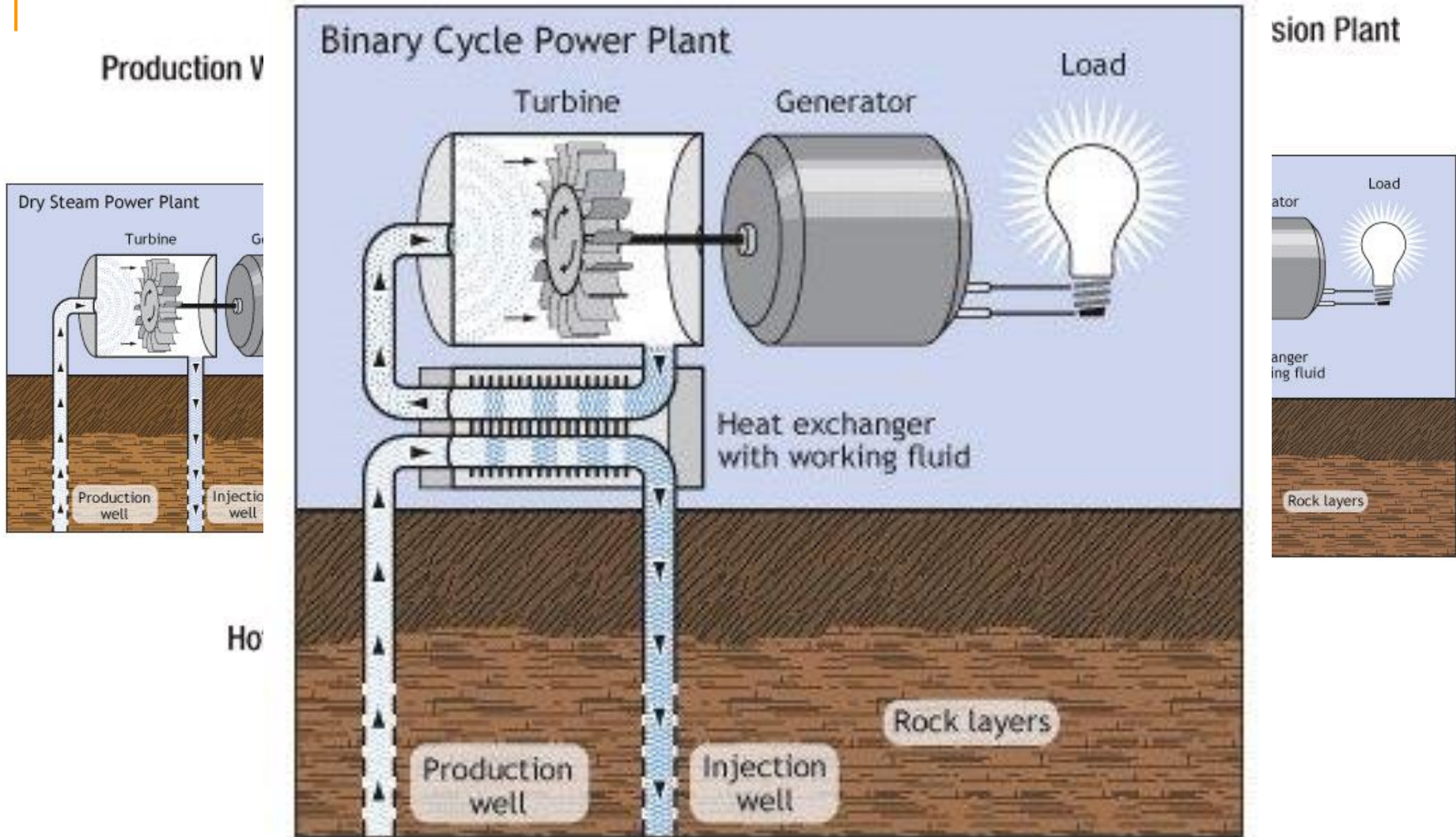
# PROJECT MANAGEMENT

## PROJECT MANAGEMENT OF GEOTHERMAL POWER PLANT



# PROJECT MANAGEMENT

## PROJECT MANAGEMENT OF GEOTHERMAL POWER PLANT





**Mathias Seibitz (Dipl. Civil Engineer)**  
**Civil & Geo Engineering Manager**  
[mseibitz@borusanenbwenerji.com](mailto:mseibitz@borusanenbwenerji.com)

[www.borusanenbw.com.tr](http://www.borusanenbw.com.tr)

